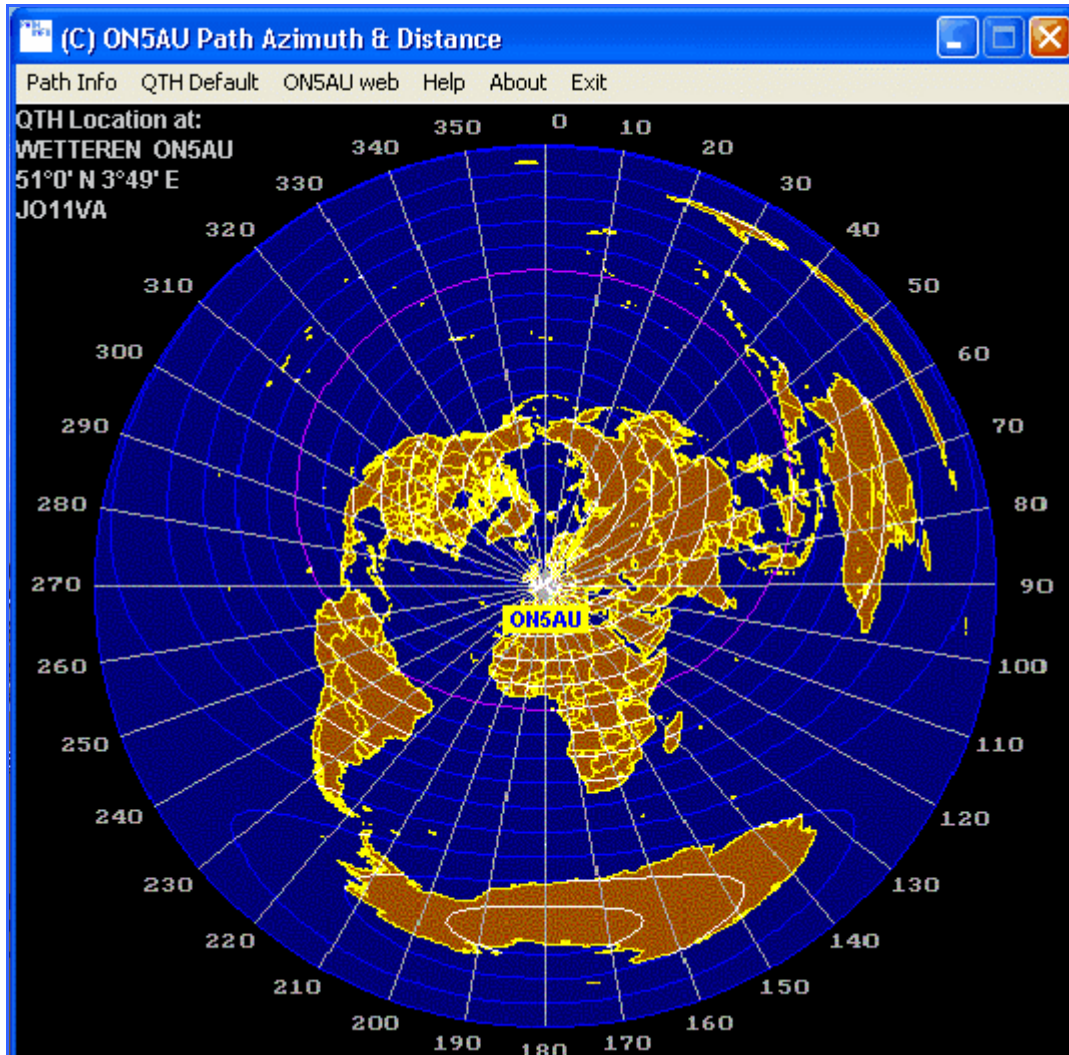


Manual

PathInfo – Distance and Bearing computing.



HOW to INSTALL?

Double Click the icon of the downloaded `pathinfo_install` file. This will create `C:\on5au-soft\pathinfo\` folder and extract the 14 files: `pathinfo.exe` – `azimuth.gif`, `qthdefaults.dat`, `pathinfo_manual.pdf`, `africa.txt`, `central america.txt`, `east asia.txt`, `europa.txt`, `north America.txt`, `oceanic.txt`, `south America.txt`, `west asia.txt`, `dxcc.txt` and `user defined.txt`.



If you wish, copy a program shortcut to your desktop.

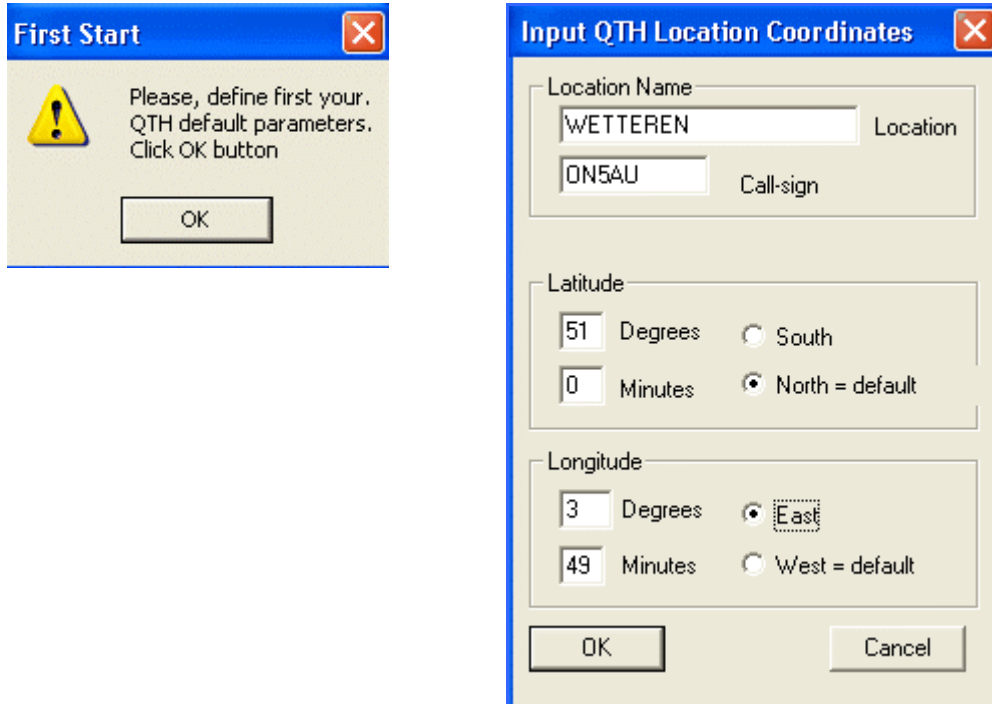
MENU-BAR

Path Info QTH Default ON5AU web Help About Exit

First Start-Up.

The program startup displays the Window screen by default with an azimuth map of my location at the center. Purchasers of the Grayzone CD-ROM can personalize the azimuth map to their location; [click here](#) and I shall send you by mail the personalized map.

At first startup you are asked to define first your default QTH location data. Later you can always change the from QTH location by the [QTH Default](#) Menu Option.



When you defined your QTH location parameters they will always appear at the left top corner of the main screen.

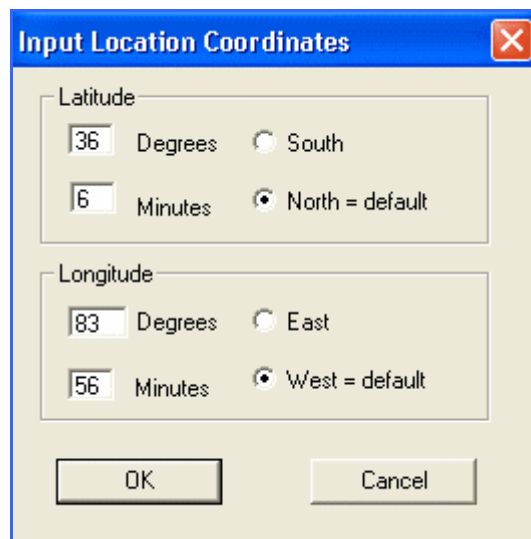
Computing the Distance and Bearing.

The [Path Info](#) Menu option.

Clicking the Path Info option opens a sub-pop-down menu with the three available computing options.



1 - Compute from QTH to a location defined with latitude/longitude.



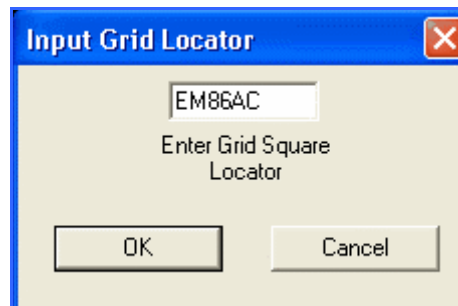
The dialog box is titled "Input Location Coordinates" and has a close button (X) in the top right corner. It is divided into two sections: "Latitude" and "Longitude".

Latitude:
Degrees: 36
Minutes: 6
Direction: South, North = default

Longitude:
Degrees: 83
Minutes: 56
Direction: East, West = default

Buttons: OK, Cancel

2 - Compute from QTH to a location defined with Maidenhead grid square locator.

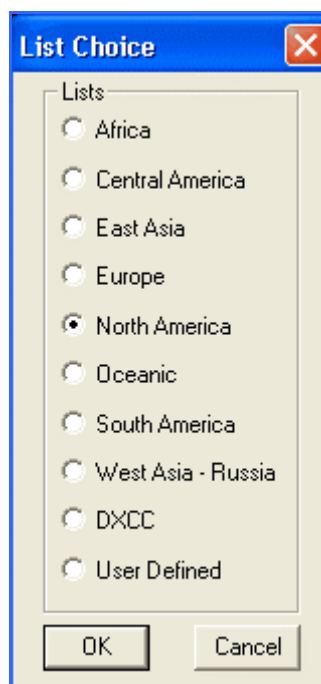


The dialog box is titled "Input Grid Locator" and has a close button (X) in the top right corner. It contains a text input field with the value "EM86AC".

Text: Enter Grid Square Locator

Buttons: OK, Cancel

3 - Compute from QTH to a location from a list by continent, DXCC or user defined..

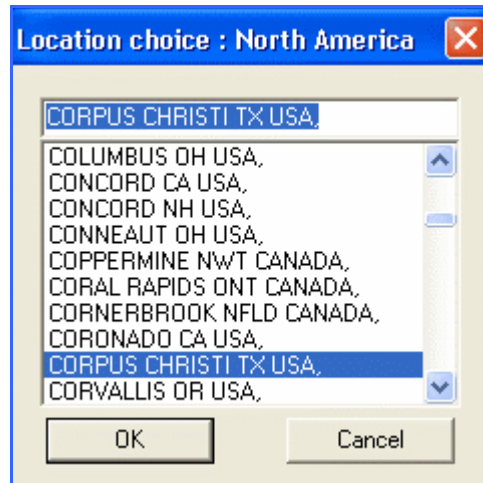


The dialog box is titled "List Choice" and has a close button (X) in the top right corner. It contains a list of radio button options.

Lists:

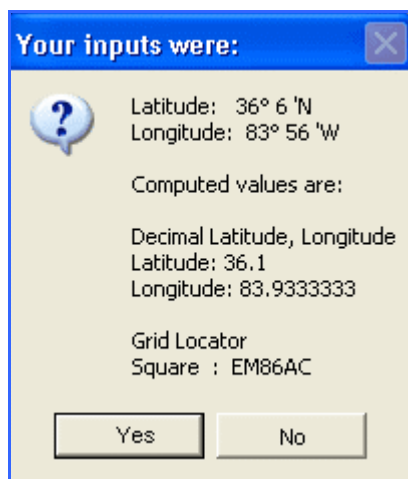
- Africa
- Central America
- East Asia
- Europe
- North America
- Oceanic
- South America
- West Asia - Russia
- DXCC
- User Defined

Buttons: OK, Cancel

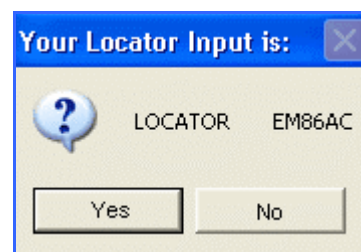


Locations list of the chosen continent.

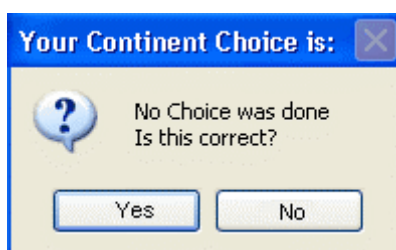
To confirm message boxes



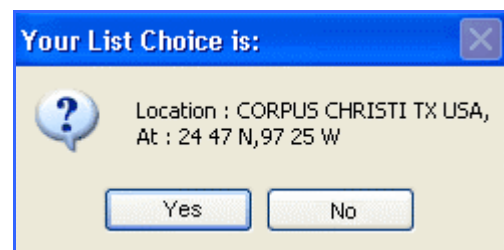
Confirm your Latitude/Longitude coordinates input.



Confirm your locator input.

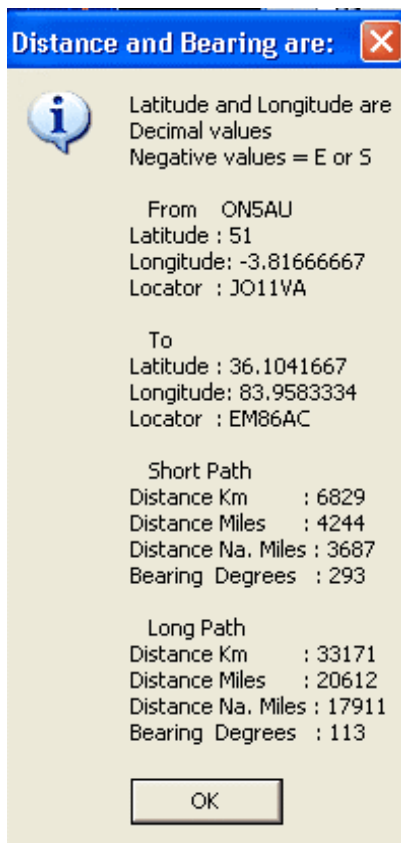


Confirm your Continent list input

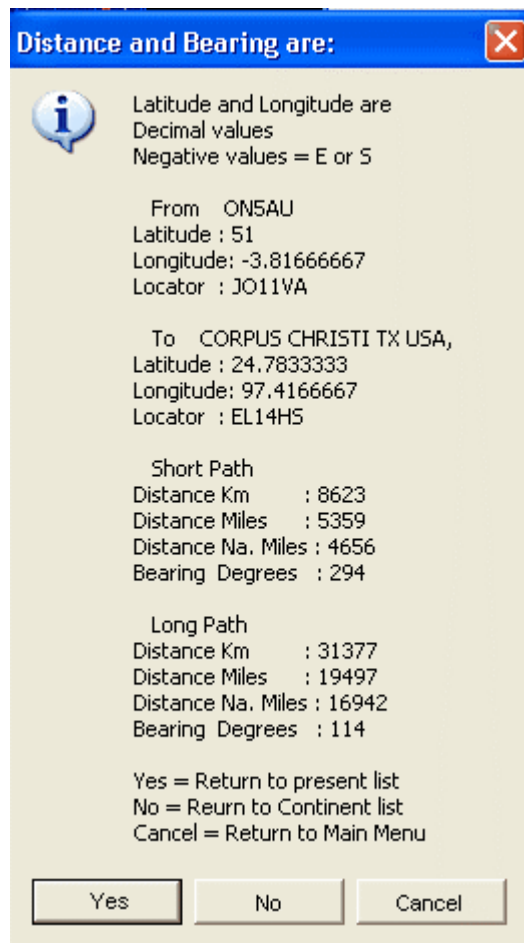


Confirm your list input.

The computed results message boxes.



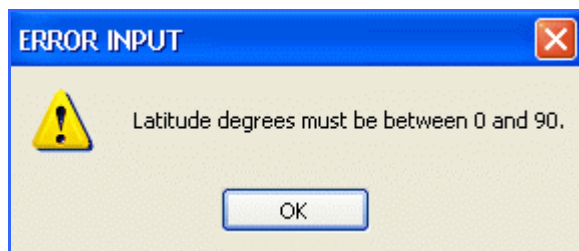
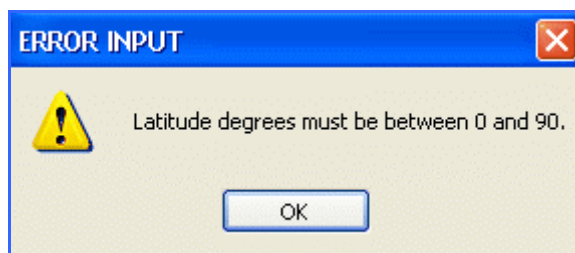
Result message from latitude/longitude
or grid square locator input option.



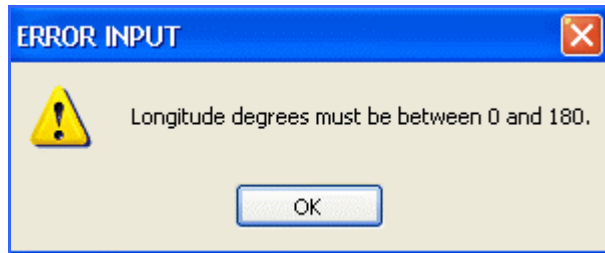
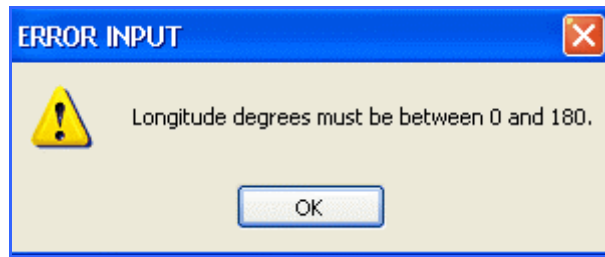
Result message from list input option.

Various error messages.

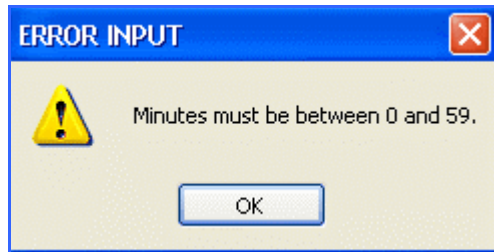
Latitude error input.



Longitude error input.

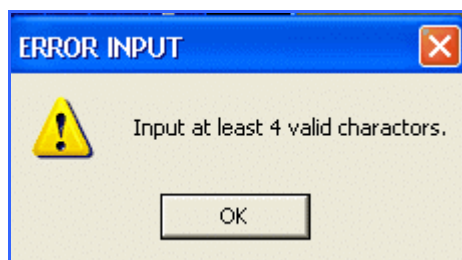


Latitude or Longitude minutes error input.

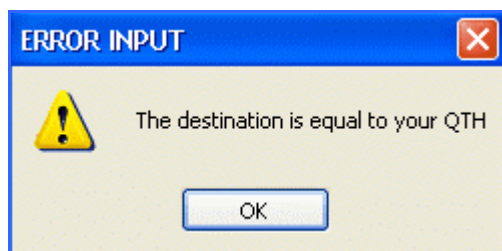


Locator error input.

The first two alpha characters must be between AA and RR. The numerical value must be from 00 to 99. The last two alpha characters must be between AA and RX. It is allowed to input only four locator definitions as: JO11, the program will automatically assign it to JO11LL. This is at the middle of the JO11 area.



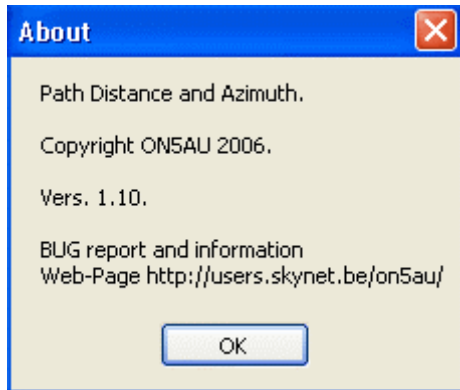
Destination is equal to QTH error input



The **ON5AU web** Menu option links you to my home webpage.

The **Help** Menu option opens this Adobe Path-Info Manual.

The **About** Menu option opens the About window with the Copyright and Version info. Please contact me if any bugs are encountered via my website. This is much appreciated.



The **Exit** is self-explaining.

Adding locations to a list or creating your own user defined list.

Adding location(s) or creating a list with your preferred locations is easily done, but you must mind certain syntax rules.

An Example: CORPUS CHRISTI TX USA,24,47,N,97,25,W

The location name and the location coordinates must be separated by a comma (,).

The latitude and the longitude coordinates must also be separated by a comma (,).

The numerical degrees and minutes and the alpha character indicating either N – S – W or E must be separated by a single space ()

A word of thanks.

This program was written by a suggestion of L. B. Cebik, W4RNL, which I immediately fulfilled. I was real fun to write the program and I hope it is useful to many radioham's and/or contesters to chase multipliers, as example.

L. B. was also of great help by beta testing during the program development.

Thanks and much appreciated, L. B.

PATHINFO

© Copyright 2005 ON5AU
LICENSE AGREEMENT

1. LICENSE GRANT

Marcel H. De Canck, ON5AU, (the "AUTHOR") grants you a non-exclusive license to install and use the PATHINFO software program (the "SOFTWARE") for non-commercial purposes only, on any computer, as long as the terms of this agreement are respected. Businesses and government agencies should contact the AUTHOR to make licensing arrangements.

2. OWNERSHIP

The SOFTWARE is owned and copyrighted by the AUTHOR. Your license confers no title or ownership in the SOFTWARE and should not be construed as a sale of any right in the SOFTWARE.

3. COPYRIGHT

The SOFTWARE is protected by Belgium copyright law and international treaty provisions. You acknowledge that no title to the intellectual property in the SOFTWARE is transferred to you. You further acknowledge that title and full ownership rights to the SOFTWARE will remain the exclusive property of the AUTHOR, and you will not acquire any rights to the SOFTWARE except as expressly set forth in this license. You agree that any copies of the SOFTWARE will contain the same proprietary notices that appear on and in the SOFTWARE.

4. ADDITIONAL RESTRICTIONS

A. You shall not and shall not permit other persons or entities to sell, rent, lease, modify, translate, reverse engineer, decompile, disassemble or include in other software the SOFTWARE or any component thereof, or create derivative works based on PATHINFO.

B. You shall not permit other persons or entities to remove or obscure copyright, trademark or other proprietary notices or legends from any of the materials contained in the SOFTWARE package.

5. DISCLAIMER OF WARRANTY

A. The SOFTWARE and documentation are provided "AS IS" and the AUTHOR disclaims all other warranties and conditions, whether expressed, implied, or statutory, including, but not limited to, fitness for a particular purpose, conformance with description, and non-infringement of third party rights. The AUTHOR does not guarantee that this SOFTWARE is free from bugs or free from computer viruses.

B. To the maximum extent permitted by applicable law, in no event shall the AUTHOR be liable for any indirect, incidental, consequential, special or exemplary damages or costs incurred arising out of the use or inability to use the SOFTWARE, even if the AUTHOR has been advised of the possibility of such damages.

C. The AUTHOR may, from time to time, revise or update the SOFTWARE. In so doing, the AUTHOR incurs no obligation to furnish such revision or updates to you.

6. GOVERNING LAW

This license shall be construed, interpreted, and governed by the laws of the country of Belgium.

WETTEREN (BELGIUM) December 23 - 2006
ON5AU. M.H. De Canck.